

Case Report

A CASE OF MALIGNANT RIGHT CORONARY ARTERY: FREQUENT ANGINA IN YOUNG PERSON

Sidhi Laksono Purwowyoto¹, Steven Philip Surya²

¹Head of Cardiac Catheterization Laboratory, Department of Cardiology and Vascular Medicine, Pasar Rebo Regional Hospital, East Jakarta/Faculty of Medicine, Universitas Muhammadiyah Prof. Dr. Hamka, Tangerang.

²Army Hospital Kesdaam Jaya Cijantung, Jakarta.

ABSTRACT

We presented a case a young adult with activity-triggered atypical chest pain and diagnosed with anomalous origin of right coronary artery (RCA) from the left coronary sinus with an interarterial course between the aorta and the main pulmonary artery that was detected by CT coronary angiography. This anomaly has been called malignant RCA. Coronary artery anomaly is a congenital condition. Most of the cases remain asymptomatic. This condition is also one of the most causes of sudden cardiac death, because the coronary artery examination is not regularly done. Nevertheless, during high intensity activity, it could be symptomatic and might be lethal. Diagnosing coronary artery anomalies might be tricky and cardiologists must be aware of this. The CAAs condition is a rare situation. The CAAs condition is associated with sudden death, especially intense physical activity. There was no rigid guideline for the management of the CAAs condition, so that planning a treatment in the inter-specialist team should be done.

Keywords: Malignant RCA; chest pain; health risks; CT coronary angiography

Correspondence: Sidhi Laksono P. Department of Cardiology and Vascular Medicine, Pasar Rebo Regional Hospital, East Jakarta/ Faculty of Medicine, Universitas Muhammadiyah Prof. Dr. Hamka, Tangerang 13460. Indonesia Email: sidhilaksono@uhamka.ac.id

How to cite: Rwtý qy k{ qvq. U N.. (Uwt {c. U R. *2223+. C Ecug qhO ciki pcpvTki j vEqtpct{ Ctvgt {<Hgs wgpvCpi kpc kp [qwpi Rgtuqp. Hqric O gf lec kpf ppgukpc. 79*6+. 3636366. j w u<lff qkqti B2.22693 lho kx79k6.3; 233

pISSN:2355-8393 • eISSN: 2599-056x • doi: 10.20473/fmi.v57i4.19233 • Fol Med Indones. 2021;57:341-344

• Submitted 27 May 2021 • Revised 18 Oct 2021 • Accepted 8 Nov 2021 • Published 7 Des 2021

• Open access under CC-BY-NC-SA license • Available at <https://e-journal.unair.ac.id/FMI/>

Hii j ni j tu

1. A young adult has activity-triggered atypical chest pain and diagnosed malignant RCA.
2. Eqpi gpkncpgo cktgu pggf gf vq dg cy ctg d{ ectf kqrqi kuu vq j gr erpkncr tceveg.
3. Rrcppipi c vtgcvo gpvcdqwo cpci go gpvqh vj g ECCu eqpf kktip uj qwf dg wpf gtvcngp d{ vj g kpvgt/ur gelckruv vgo .

INTRODUCTION

Coronary artery anomalies (CAAs) are still becoming an important matter to discuss in basic and clinical practice. There is extensively discussed in the literature regarding the definition of CAAs, especially in how it can be different with a normal variant of the coronary artery. Nevertheless, a previous study has proposed a comprehensive classification of CAAs based on several groups of abnormalities; anomalies of origination and course, anomalies of intrinsic coronary arterial anatomy, anomalies of coronary termination, and abnormal anastomotic vessels (Angelini 2007). Moreover, Angelini (2002) had proposed an accessible definition of the normal variant shown in Table 1. The

clinical spectrum of CAAs is enormously extensive, from asymptomatic to resting ischemia. The awareness of atypical coronary anatomy could help the cardiologist in giving precise diagnosis and treatment, including catheterization laboratory and surgical procedure (Angelini 2002).

The CAAs are a rare congenital condition, and their incidence is around 2.39' /3.4' *1 raidis et al. 4237+. Tegardless of its incidence, around 42' of the CAAs are malignant and could undergo life/threatening manifestation, such as

lethal arrhythmias, syncope, myocardial infarction, or even sudden death (Fatta et al. 2005). Specifically, the incidence of the malignant CAAs from the right coronary artery origins is around 0.03-0.17% from patients undertaking angiography (Satija et al. 2012). Here, we presented the right CAAs malignant type with symptomatic atypical chest pain in 34 years old man.

Table 1. Purpose definition of the normal heart variant conditions

Feature	Range
Number of Ostia	2 – 4
Location	Right and left anterior sinuses (upper mid-section)
Proximal orientation	45-90 degrees off the aortic wall
Proximal common stem or trunk	Only left (left anterior descending and left circumflex artery)
Proximal course	Direct, from ostium to destination
Mid-course	Extramural (sub-epicardial)
Branches	Adequate for the dependent myocardium
Essential territories	Right Coronary Artery (Right ventricle free wall) Left anterior descendent (anteroseptal) Obtuse Marginal Artery (Left ventricle free wall)
Termination	Capillary bed

CASE REPORT

A-34-years-old man has complained of vague chest pain since more than six months ago. There were no risk factors or any significant past medical history. No remarkable result from routine blood examination and rest electrocardiography (ECG). However, during exercise the treadmill test showed ST depression in the lead VI. The patient was referred to the radiology department to undergo CT coronary angiography.

CT coronary angiography was performed using a 64 slice CT scanner (Brilliance-64, Philips, The Netherland). The following parameters were used: 120 KVp, 800 mAs, rotation time: 0.4 s, and collimation: 64 × 0.625mm. Using a dual-head pressure injector, 80 ml of non-ionic iodinated contrast was administered at the rate of 5 ml/sec, followed by 20 ml of saline. The total scan time was 8.6 seconds. Reconstruction was done with 0.6 mm slice thickness 0.5 mm increment.

CT coronary angiography showed the right coronary artery originating from the left coronary sinus, coursing between the aortic root and pulmonary artery (Figure 1a). The rest of the coronary arteries, the left coronary artery and its branches, a normal course (Figure 1b, and Figure 1c). However, we did not yet decide on the treatment for this patient, and still need to follow-up for reassurance (Figure 1).

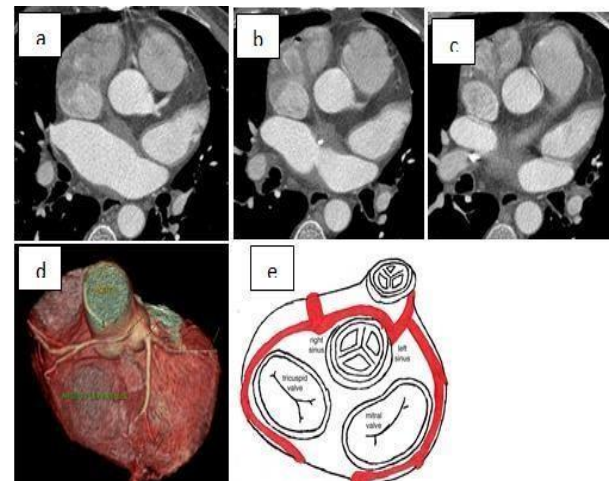


Figure 1. The schematic representation of malignant right coronary artery

Figure 3. CT coronary angiography and schematic figure of malignant RCA. A-c. Maximum intensity projection of the heart showing RCA and LCA originating from LCS. RCA courses between PA and Aorta. d. Volume rendered image showing malignant RCA of this patient with intra-arterial course of RCA. e. Schematic figure of malignant RCA.

DISCUSSION

The CAAs were frequently found as the cause of sudden death (SD) cases in the young. Even though it is a congenital condition, many subjects survive asymptomatic until young adult (Basso 2005). The anomalous coronary artery (CA) origin, either left the main artery from the right sinus or vice versa, had been found 0.17% during autopsy (Basso 2005). Moreover, recent studies found four children from 2,388 children underwent angiogram diagnosed with either anomalous origin of the left main coronary artery (ALMCA) from the right sinus or anomalous origin of the right coronary artery (ARCA) from the left sinus (Davis et al. 2001). Two and half week-old patients with ARCA had normal serial resting ECG after repeated 12 ECG exams one, a half months later and at 35 months. However, the 12 years old patient showed uniform ventricular ectopy with a left bundle configuration consistent with right ventricular origin.

The ectopy diminishes during exercise ECG. In exercise ECG, there was also abnormal repolarization of the lateral chest lead with T-wave inversion and ST elevation. The treadmill exercise perfusion study exhibited inferior wall ischemia of moderate intensity in the RCA perfusion area. The patient persisted

asymptomatic during the test. In our case, the patient never underwent either resting or exercise ECG before and remained asymptomatic. Until the patient reached 34 years old, when he was busy with his job, he suffered atypical chest pain. The resting ECG resulted in no remarkable result. On the other hand, treadmill ECG examination showed notable change with suspicion from right ventricular origin.

Anomaly aortic origins of coronary arteries account for 14-17% of sudden cardiac death for healthy children or young athletes during or immediately after physical exercise (Silva et al. 2018). The lethal mechanisms of the CAAs are considered through malignant arrhythmias and ischemia-myocardial dysfunction (Lluri & Aboulhson 2014). Those mechanisms are triggered by vigorous physical exercise (Hill & Sheppard 2014). Anomaly aortic origins of coronary arteries further classified into two subgroups; anomalous origin of coronary arteries from the opposite sinus (ALMCA and ARCA), and anomalous left coronary artery from the pulmonary artery (ALCAPA). Despite the classification of the two subgroups, the correlation with sudden cardiac death is quite high (Lluri & Aboulhson 2014). The physiological supply and demand of the heart depend on its exercise type.

During isotonic and isometric exercises, the venous return, and left end-diastolic volume will increase. The adrenergic system stimulation also increases the heart rate, blood pressure, cardiac output, and myocardial contractility. The purpose of the mechanism is to increase oxygen supply to the heart. Unfortunately, the CAAs condition is contrary to that purpose (Wasfy et al. 2015; Cheitlin & MacGregor 2009). In this patient, asymptomatic condition (until he grew up to adult), seemed rational since the patient was not an athlete, and he was probably not doing high-intensity exercise until he became very busy with his work now. Nonetheless, this type of CAAs are associated with a high risk of sudden cardiac death based on previous evidence (Basso 2005). We strongly suggested the patient to reduce his work intensity and scheduled a follow-up meeting to plan the treatment.

In ALMCA or ARCA conditions, the proximal segment of the anomalous CA may course anterior to the pulmonary trunk, posterior to the aorta, or between the pulmonary artery and the aorta (Basso 2005). At some points, especially during exercise, the CA squeezes due to the increased cardiac output with a diastolic expansion of great vessels. As a result, myocardial ischemia might be happening (Basso 2005; Silva et al. 2018; Cheitlin & MacGregor 2009). The ALMCA might have a bigger risk of sudden cardiac death compared to ARCA (Basso 2005). In this case, our patient had an ARCA condition, and this condition

might have a lower risk than ALMA's risk of sudden cardiac death. However, this condition could still be life-threatening.

Strength and limitation

The strength of this case report is its focus on a rare and potentially life-threatening condition, anomalous origin of the right coronary artery, and the importance of early diagnosis for preventing sudden cardiac death. The fact report that this condition can be asymptomatic and difficult to detect, and emphasizes the need for increased awareness and regular screening for coronary artery anomalies. Additionally, the report emphasizes the importance of interdisciplinary collaboration for effective management of this condition.

CONCLUSION

In conclusion, the CAAs condition is a rare situation. However, cardiologists need to be aware of congenital anomalies because it might help in clinical practice. Even though the incidence is low, the CAAs condition is associated with sudden death, especially intense physical activity. There was no rigid guideline for the management of the CAAs condition, so that planning a treatment in the inter-specialist team should be done.

Aempqy ngf i go gpv

The authors thanks Cro { J quf kcn Mguf co Lc {c Ekfptwpi ,Lcnrtc cpf J gcf qh Ecrf kce Ectj gtrk ctkqp Lcdqrctqr {, Fgrcrto gpt qh Ecrf kqrqi { cpf Xcuewr O gf kelpg, Hcwt { qh O gf kelpg, Wplxgrukt cu O wj co o cf k {cj Prqh Fr. J co n, Vcpi grcpi , Kpf qpguk.

Conflict of interest

None0

Funding disclosure

P one0

Author contribution

SPS-conceptualized the study, SLP-wrote the manuscript, revised, collected and analyzed the data, SPS-validated and finalized the manuscript.

REFERENCES

Angelini P (2002). Coronary artery anomalies – current clinical issues: Definitions, classification, incidence, clinical relevance, and treatment guideline. *Tex Heart J* 29, 271-278.

- Angelini P (2007). Coronary artery anomalies: An entity in search of an identity. *Circulation* 115, 1296-1305.
- Basso C (2005). Congenital coronary artery anomalies at risk of myocardial ischemia and sudden death. *European Cardiology* 1, 1-5.
- Cheitlin MD, MacGregor J (2009). Congenital anomalies of coronary arteries: role in the pathogenesis of sudden cardiac death. *Herz* 34, 268-279.
- Datta J, White CS, Glikeson RC, et al (2005). Anomalous coronary arteries in adults: Depiction at multi-detector row CT angiography. *Radiology* 235, 812-818.
- Davis JA, Cecchin F, Jones TK, (2001). Major coronary artery anomalies in a pediatric population: incidence and clinical importance. *J Am Coll Cardiol* 37, 593-597.
- Graidis C, Dimitriadis D, Karasavvidis V, et al (2015). Prevalence and characteristic of coronary artery anomalies in an adult population undergoing multidetector-row computed tomography for the evaluation of coronary artery disease. *BMC Cardiovasc Disord* 15, 1-10.
- Hill SF, Sheppard MN (2014). A silent cause of sudden cardiac death especially in sport: Congenital coronary artery anomalies. *Br J Sport Med* 48, 115-116.
- Lluri G, Aboulhosn J (2014). Coronary arterial development: A review of normal and congenital anomalous patterns. *Clin Cardiol* 37, 126-130.
- Satija B, Sanyal K, Katyani K (2012). Malignant anomalous right coronary artery detected by multidetector row computed tomography coronary angiography. *J Cardiovasc Dis Res* 3, 40-42.
- Silva A, Baptista MJ, Araujo E (2018). Congenital coronary artery anomalies. *Rev Port Cardiol.* 37, 341-350.
- Wasfy MM, Weiner RB, Wang F, et al (2015). Endurance exercise-induced cardiac remodeling: not all sports are created equal. *J Am Soc Echocardiogr* 28, 1434-1440.