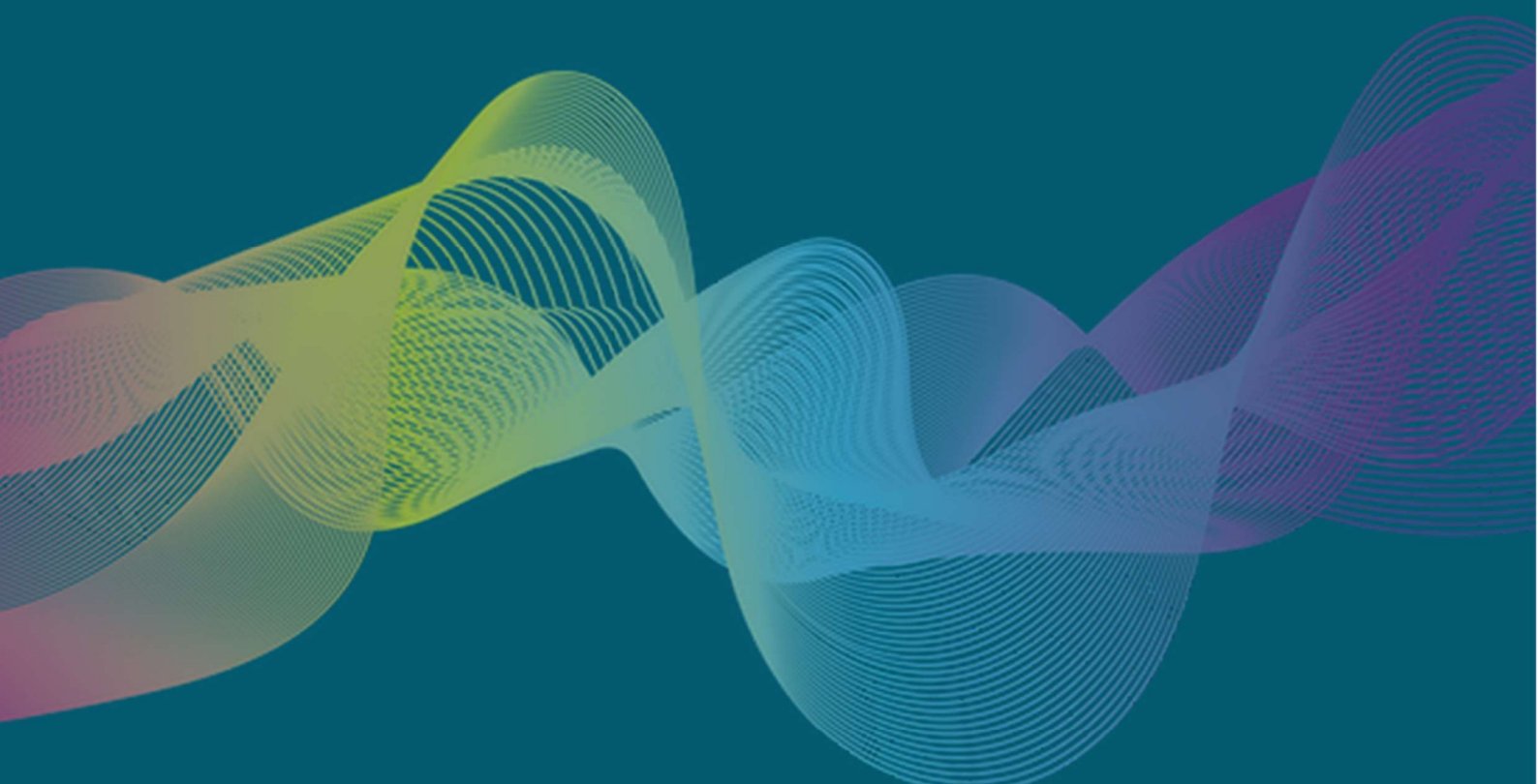




INDONESIAN JOURNAL *of* HEALTH ADMINISTRATION

JURNAL ADMINISTRASI KESEHATAN INDONESIA



Volume 10. Issue 1. June 2022

Original Research

Digital marketing model that can be used to guide hospitals to attract more customers.

See Page 23-30

Original Research

How the COVID-19 pandemic had increased the number of maternal deaths.

See Page 70-78

Literature Review

Improving the quality of services during the pandemic also needs to consider how to fulfill basic medical needs.

See Page 133-142

<http://e-journal.unair.ac.id/JAKI>

oa
Open Access



Indonesian Journal of Health Administration (Jurnal Administrasi Kesehatan Indonesia) is published by Universitas Airlangga, Faculty of Public Health, Department of Health Administration and Policy collaborated with Indonesian Public Health Union (*Persakmi*). We welcome all of experts, practitioners, and academicians who are interested in healthcare administration to submit their articles. Articles in this journal discuss various current issues in healthcare administration. The publication is issued twice a year (June and December). Indonesian Journal of Health Administration has been indexed by DOAJ, Google Scholar, SINTA 2, Garuda, BASE, EBSCO, Hinari, and *Indonesian Publication Index (IPI)*.

**EDITORIAL BOARD OF INDONESIAN JOURNAL OF HEALTH ADMINISTRATION
(JURNAL ADMINISTRASI KESEHATAN INDONESIA)**

EDITOR IN CHIEF:

Nuzulul Kusuma Putri (Universitas Airlangga, Indonesia)

EDITORIAL BOARDS:

Dr. P.H. Vallerut Pobkeeree, Mahidol University, Thailand
Dr. Aidalina Mahmud, Universiti Putra Malaysia, Malaysia
Dr. Anis Fuad, Gadjah Mada University, Indonesia
Dr. Oliver Mudyarabikwa, Coventry University, United Kingdom
Ilham Akhsanu Ridlo, S.KM., M.Kes., Indonesian Public Health Union (Persakmi), Indonesia
Dr. Azniah Syam, S.KM, M.Kes., College of Health Sciences General Nani Hasanuddin, Indonesia
Dr. Ima Nadatien, S.KM., M.Kes., University of Nahdatul Ulama Surabaya, Indonesia
Nia Kurnia Sholihat, M.Sc., Apt., University of Jenderal Soedirman, Indonesia
dr. Nur Aisyah Jamil, M.Sc., Islamic University of Indonesia, Indonesia
Andini Yulina Pramono, S.KM., M.MARS, Australia National University, Australia
Angelo Ercia, M.PH., Ph.D, European Public Health Association, United Kingdom
Dwi Rukma Santi, S.ST., M.Kes., Islamic State University of Sunan Ampel, Indonesia
Fauzie Rahman, S.KM., M.PH., Lambung Mangkurat University, Indonesia
Naiya Patel, M.P.H., B.D.S., University of Louisville School of Public Health, United States
Dr. Haerawati Idris, S.KM, M.Kes, Sriwijaya University, Indonesia
Nur Atika, S.KM., M.Kes, Center for Health Economics and Policy Studies, Indonesia
Alya Hazfiarini, S.KM., University of Melbourne, Australia

ADVISORY BOARD:

Prof. Dr. Sathirakorn Pongpanich, Chulalongkorn University, Thailand
Adam Layland, MCPPara, MIHM, MCMI, FInstLM, FHEA., Coventry University, United Kingdom
Agung Dwilaksono, S.KM., M.Kes., Research and Development Department of Health Ministry, Indonesia
Assoc. Prof. Reece Hinchcliff, Queensland University of Technology, Australia
Prof. Dr. Ridwan Amiruddin, SKM, M.Kes, Indonesian Public Health Union (Persakmi), Indonesia
Prof. Sukri Palutturi, S.KM, M.Kes, MSc.PH, Hasanuddin University, Indonesia
Hanifa Maher Denny, S.KM, M.PH, Ph.D., Diponegoro University, Indonesia
Dr. Ronald Del Castillo, University of the Philippines, Philippines

PEER REVIEWERS:

Dr. Arih Diyaning Intiasari, S.KM., MPH., Universitas Jenderal Soedirman, Indonesia
Lilis Masyfufah A.S., S.KM., M.Kes. RSUD Dr. Soetomo College of Health Science, Indonesia
Dr. Yandrizal, S.KM., M.Kes., STIKES Tri Mandiri Sakti, Indonesia
Arip Ambulan Panjaitan, SKM., M.Kes., College of Health Sciences Kapuas Raya, Indonesia
Dr. Demsa Simbolon, S.KM., M.KM., Poltekkes Kemenkes Bengkulu, Indonesia
Dr. drg. Johan Arief Budiman, Sp.ORT, Universitas Trisakti, Indonesia
Dr. Ernawaty, drg., M.Kes., Universitas Airlangga, Indonesia
Dr. Tatin Wahyanto, S.Kom., M.Kes., PIA., CIT, Muji Rahayu Hospital, Indonesia
Rosda Febriana, S.Farm., M.Farm.Klin., Apt., Bhakti Dharma Husada Hospital, Indonesia
Asmaripa Ainy, S.Si., M.Kes, Sriwijaya University, Indonesia
Dian Mawarni, Gadjah Mada University, Indonesia
Ns. Yelmi Reni Putri, S.Kep., MAN., College of Health Sciences General Fort De Kock, Indonesia
Tika Indiraswari, S.Si., M.Kes., Universitas Serambi Mekkah, Indonesia
M. Iqbal Nurmansyah, Universitas Islam Negeri Syarif Hidayatullah, Indonesia



Wiwin Nur Aeni, S.Kep, Ns., M.Kep., College of Health Sciences Indramayu, Indonesia
Agung Dwilaksono, S.KM., M.Kes., Research and Development Department of Health Ministry, Indonesia
Maya Weka Santi, S.KM., M.Kes., State Polytechnic of Jember, Indonesia
Eka Wilda Faida, S.KM., M.Kes., RSUD Dr. Soetomo College of Health Science, Indonesia
Nur Atika, S.KM., M.Kes., Center for Health Economics and Policy Studies, Indonesia
Dwi Astuti Dharma Putri, Gadjah Mada University, Indonesia
Dr. Djazuly Chalidyanto, S.KM., M.Kes., Universitas Airlangga, Indonesia
Ika Nurmaya, S.KM., M.Kes., Universitas Negeri Surabaya, Indonesia
Wahyul Anis, S.Keb.Bd., M.Kes., Universitas Airlangga, Indonesia

EDITORIAL ASSISTANT:

Arif Wardoyo (Universitas Airlangga, Indonesia)
Zakiah Dania Billah (Universitas Airlangga, Indonesia)

EDITORIAL ADDRESS:

Faculty of Public Health (3rd Floor, JAKI OFFICE) Universitas Airlangga
Jl. Mulyorejo Kampus C Unair, Surabaya 60115, Indonesia
Telp. (62) (31) 5928994, (62) (31) 60707527, Fax (62) (31) 5927113

E-mail: jaki@fkm.unair.ac.id

Facebook Fanpage: <https://www.facebook.com/JAKIoffice/>

Twitter: <https://twitter.com/JAKIoffice>

Publons: <https://publons.com/journal/66689/jurnal-administrasi-kesehatan-indonesia-jaki>

Medium: <https://medium.com/ijha>

Website: <https://e-journal.unair.ac.id/JAKI>



LIST OF CONTENT

Maternal Death, Quality Services, and Mental Health: A Cycle or Repeated Episode? <i>Kematian Ibu, Kualitas Layanan, dan Kesehatan Mental: Siklus atau Episode Berulang?</i> Nuzulul Kusuma Putri	1-2
Health Expenditure Analysis in Patients with Pregnancy-Labor Complications in Surabaya <i>Analisis Pengeluaran Biaya Kesehatan Pada Penderita Komplikasi Kehamilan-Persalinan di Kota Surabaya</i> Ernawaty, Dewi Sri	3-13
Health Institutional Support for Health Workers as Role Models for A Healthy Life <i>Dukungan Institusi Kesehatan Terhadap Tenaga Kesehatan Sebagai Panutan Hidup Sehat</i> Agustina Arundina Triharja Tejoyuwono	14-22
Design of Marketing Plan for Dental Hospitals in The Digital Era <i>Rancangan Rencana Pemasaran untuk Rumah Sakit Gigi dan Mulut di Era Digital</i> Yusuf Arifin, Jane Firsty Melia, Fushen	23-30
A Qualitative Study: Hospital Patient Complaint Management <i>Studi Kualitatif: Manajemen Keluhan Pasien di Rumah Sakit</i> Siti Kurnia Widi Hastuti, Nikita Cahyani Baginda, Selly Aprianda	31-40
Parents' Satisfaction with Measles Rubella Immunization Services for Schoolers during the COVID-19 Pandemic <i>Kepuasan Orang Tua pada Layanan Imunisasi Measles Rubella Anak Sekolah Selama Pandemi COVID-19</i> Lolita Indah Pradini, Ayun Sriatmi, Eka Yunila Fatmasari	41-49
The Effect of Service Quality Dimensions on Hemodialysis Patient Satisfaction in Indonesia <i>Pengaruh Dimensi Kualitas Pelayanan Terhadap Kepuasan Pasien Hemodialisis di Indonesia</i> Lia Kurnia Hartanti, Ferdi Antonio	50-59
Prevalence of Burnout Symptoms in Nurses Hospital Assigned to COVID-19 Isolation Rooms <i>Prevalensi Gejala Burnout Perawat di Rumah Sakit yang Ditugaskan di Ruang Isolasi COVID-19</i> Sylvia Jessy Kurniawan, Kuswantoro Rusca Putra, I.G.A. Gede Utara Hartawan	60-69
The Impact of The COVID-19 Pandemic on Maternal Mortality Attributes <i>Dampak Situasi Pandemi COVID-19 Terhadap Karakteristik Kematian Maternal</i> Dyah Ayu Fatmaningrum, Wahyul Anis, Muhammad Ardian Cahya Laksana	70-78
The Internet as a Health Information in Decision Making of Pregnant Women <i>Internet Sebagai Informasi Kesehatan dalam Pengambilan Keputusan Wanita Hamil</i> Nyoman Anita Damayanti, Ratna Dwi Wulandari, Ilham Akhsanu Ridlo, Nadhif Alifa C Kusniar, Asrining Pangastuti	79-88
The Acceptance of Medical Record Officer Towards MRMIS in X Hospital Mataram <i>Penerimaan Petugas Rekam Medis terhadap SIMRM RS X Kota Mataram</i> Nurul Khatimah Ismatullah, Aris Puji Widodo, Sri Achadi Nugraheni	89-98
Patterns of Medicine Use for COVID-19 Patients at Undata Hospital Palu <i>Pola Penggunaan Obat pada Pasien COVID-19 di RSUD Undata Palu</i> Amelia Rumi, Nurul Ambianti, Desti Sulistiani S. Arbi	99-110



LIST OF CONTENT

Determinants of The National Health Insurance Uptake in Indonesia <i>Faktor yang Mempengaruhi Tingkat Kepesertaan Jaminan Kesehatan Nasional di Indonesia</i> Abdu Nafan Aisul Muhlis	111-121
Reducing Infant and Under-5 Mortality Rate Through Government Health Expenditure: A Systematic Review <i>Penurunan Angka Kematian Bayi dan Balita dengan Belanja Kesehatan Pemerintah: Systematic Review</i> Alissa Sita Pertiwi, Amal Chalik Sjaaf	122-132
Sri Lanka Oxygen Readiness and Strategies Adapted for COVID-19 Patients’ Management <i>Kesiapan Oksigen Sri Lanka dan Strategi yang Diadaptasikan untuk Penanganan Pasien COVID-19</i> DH Liyanage, MDA Krishanth, PN Wickramaratne, AKSB De Alwis, PWC Pannapitiya, UAAS Perera, IS Yaddehige	133-142
Implementation of Stunting Program in Indonesia: A Narrative Review <i>Implementasi Program Stunting di Indonesia: Kajian Naratif</i> Siti Zaleha, Haerawati Idris	143-151



All articles published in Indonesian Journal of Health Administration (Jurnal Administrasi Kesehatan Indonesia) are open access under the Creative Common Attribution Lisence (<http://creativecommons.org/licenses/by/4.0>); thus, build upon the material, copy and distribution of the material are not limited as long as the original source is cited.