

Volume 53, Issue 3, September 2020

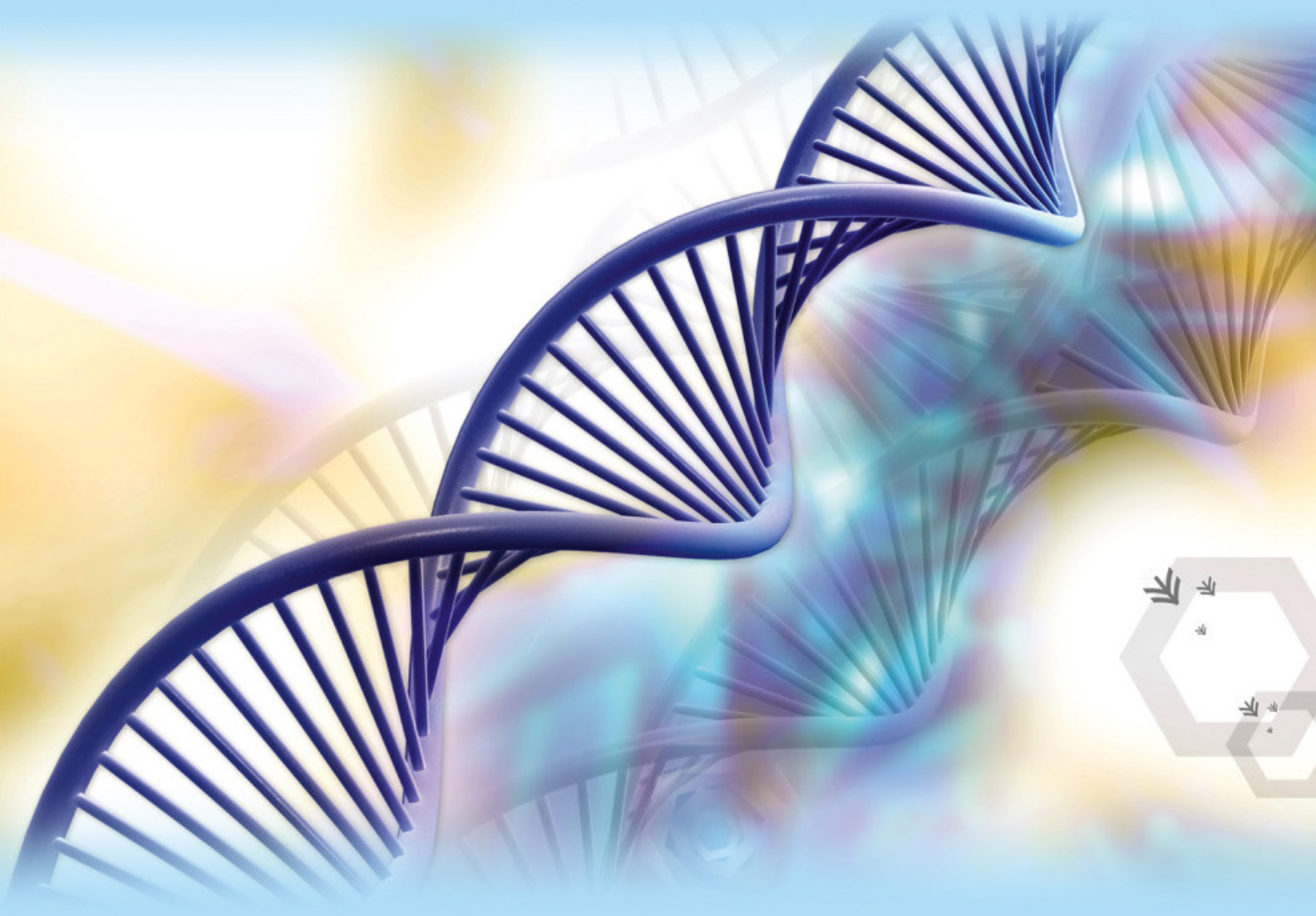
p-ISSN: 1978-3728

e-ISSN: 2442-9740

Dental Journal

Published quarterly per year

Majalah Kedokteran Gigi



The pore size of chitosan-Aloe vera scaffold and its effect on VEGF expressions and woven alveolar bone healing of tooth extraction of *Cavia cobaya* • The correlation analysis of dental caries, general health conditions and daily performance in children aged 2-5 years old • Leukoplakia in HIV patients and risk of malignancy: A case report

Accredited No. 32a/E/KPT/2017

Dental Journal

Majalah Kedokteran Gigi

EDITORIAL TEAM OF DENTAL JOURNAL (MAJALAH KEDOKTERAN GIGI)

SK: 07/UN3.1.2/2020

January 2nd – December 31st, 2020

Patron:

Dean of Faculty of Dental Medicine, Universitas Airlangga

Advisors:

Vice Dean I, Vice Dean II, Vice Dean III

Chief Editor:

Saka Winias, drg., M.Kes., Sp.PM

(Department of Oral Medicine, Faculty of Dental Medicine, Universitas Airlangga)

Editorial Boards

Roeland Jozef Gentil De Moor (Department of Restorative dentistry and Endodontology, Dental School, Ghent University, Belgium); **Cortino Sukotjo** (University of Illinois at Chicago College of Dentistry, Department of Restorative Dentistry, Chicago, United States); **Guang Hong** (Liaison Center for Innovative Dentistry, Graduate School of Dentistry, Tohoku University, Japan); **Kenji Yoshida** (Department of Oral and Maxillofacial Surgery, School of Dentistry, Aichi Gakuin University, Nisshin, Japan); **Miguel Rodrigues Martins** (Co-Worker Aachen Dental Laser Center, RWTH Aachen University, Aachen, Germany); **Sajee Sattayut** (Department of Oral Surgery, Faculty of Dentistry, Khon Kaen University, Khon Kaen, Thailand); **Samir Nammour** (Department of Dental Science, Faculty of Medicine, University of Liege, Belgium); **Reza Fekrazad** (Laser Research Center in Medical Science, Dental Faculty, AJA University of Medical Science, Tehran, Iran); **Hong Sai Loh** (Department of Oral and Maxillofacial Surgery, Faculty of Dentistry, National University of Singapore, Singapore); **Widowati Witjaksono** (Kulliyah of Dentistry, International Islamic University Malaysia, Malaysia); **Hamid Nurrohman** (Missouri School of Dentistry & Oral Health A.T. Still University 800 W. Jefferson St. Kirksville, Missouri, USA, United States); **Harry Huiz Peeters** (Laser Research Center, Bandung, Indonesia); **Rahmi Amtha** (Department of Oral Medicine, Faculty of Dentistry, Universitas Trisakti, Indonesia); **Elza Ibrahim Auerkari** (Department of Oral Biology, Faculty of Dentistry, Universitas Indonesia, Indonesia); **R. Darmawan Setijanto** (Department of Dental Public Health, Faculty of Dental Medicine, Universitas Airlangga, Indonesia); **Anita Yuliaty** (Department of Dental Material Sciences and Technology, Faculty of Dental Medicine, Universitas Airlangga, Indonesia); **Udijanto Tedjosongko** (Department of Pediatric Dentistry, Faculty of Dental Medicine, Universitas Airlangga).

Managing Editors

Ketut Suardita (Department of Conservative Dentistry, Faculty of Dental Medicine, Universitas Airlangga, Indonesia); **Alexander Paterna Nugraha** (Department of Orthodontics, Faculty of Dental Medicine, Universitas Airlangga, Indonesia); **Astari Puteri** (Department of Oral and Maxillofacial Pathology, Faculty of Dental Medicine, Universitas Airlangga, Indonesia); **Nastiti Faradilla** (Department of Oral and Maxillofacial Radiology, Faculty of Dental Medicine, Universitas Airlangga, Indonesia); **Beta Novia Rizky** (Department of Forensic Odontology, Faculty of Dental Medicine, Universitas Airlangga, Indonesia); **Aulia Ramadhani** (Department of Dental Public Health, Faculty of Dental Medicine, Universitas Airlangga, Indonesia).

Peer-Reviewers

Siti Sunarintyas (Department of Biomaterials, Faculty of Dentistry, Universitas Gadjah Mada, Indonesia); **Arlette Suzy Setiawan** (Department of Pediatric Dentistry, Faculty of Dentistry, Universitas Padjadjaran, Indonesia); **Kurnia Dwi Artanti** (Department of Epidemiology, Faculty of Public Health, Universitas Airlangga, Indonesia); **Ida Ayu Evangelina** (Department of Orthodontics, Faculty of Dentistry, Universitas Padjadjaran, Indonesia); **Rosa Amalia** (Department of Preventive and Community Dentistry, Faculty of Dentistry, Universitas Gadjah Mada, Indonesia); **Retno Widayati** (Department of Orthodontics, Faculty of Dentistry, Universitas Indonesia, Indonesia); **Ida Bagus Narmada** (Department of Orthodontics, Faculty of Dental Medicine, Universitas Airlangga, Indonesia); **Diah Savitri Ernawati** (Department of Oral Medicine, Faculty of Dental Medicine, Universitas Airlangga, Indonesia); **Ni Putu Mira Sumarta** (Department of Oral and Maxillofacial Surgery, Faculty of Dental Medicine, Universitas Airlangga, Indonesia); **Dini Setyowati** (Department of Dental Public Health, Faculty of Dental Medicine, Universitas Airlangga, Indonesia); **Maretaningtyas Dwi Ariani** (Department of Prosthodontics, Faculty of Dental Medicine, Universitas Airlangga, Indonesia); **Ratri Maya Sitalaksmi** (Department of Prosthodontics, Faculty of Dental Medicine, Universitas Airlangga, Indonesia); **Desiana Radithia** (Department of Oral Medicine, Faculty of Dental Medicine, Universitas Airlangga, Indonesia); **Nurina Febriyanti Ayuningtyas** (Department of Oral Medicine, Faculty of Dental Medicine, Universitas Airlangga, Indonesia).

Administrative Assistant

Novi Dian Prastiwi (Faculty of Dental Medicine, Universitas Airlangga); **Abdullah Mas'udy** (Faculty of Dental Medicine, Universitas Airlangga)

Editorial Address:

Faculty of Dental Medicine, Universitas Airlangga
Jl. Mayjen. Prof. Dr. Moestopo No. 47 Surabaya 60132, INDONESIA
Phone. +62 31 5039478/5030255. Fax. +62 31 5039478/5020256
E-mail: dental_journal@fkg.unair.ac.id; Website: <https://e-journal.unair.ac.id/MKG>

Accredited No. 32a/E/KPT/2017

Cover photo purchased from: www.fotolia.com
Invoice number: 206803056-204225738

Dental Journal

Majalah Kedokteran Gigi

CONTENTS

	<i>Page</i>
1. The pore size of chitosan- <i>Aloe vera</i> scaffold and its effect on VEGF expressions and woven alveolar bone healing of tooth extraction of <i>Cavia cobaya</i> Sularsih	115–121
2. The correlation analysis of dental caries, general health conditions and daily performance in children aged 2–5 years Darmawan Setijanto, Taufan Bramantoro, Nanissa Dyah Anggraini, Ardhyana Dea Maharani, Dwita Angesti, Dani Susanto Hidayat and Aulia Ramadhani	122–125
3. Telescopic overdenture as an alternative rehabilitation for the loss of several anterior teeth due to traffic accidents Birgitta Dwitya Swastyayana Subiakto and Utari Kresnoadi	126–132
4. The changing of occlusal plane inclination in Class II malocclusion Nelvi Yohana, Siti Bahirrah and Nazruddin	133–139
5. The effect of body mass index on tooth eruption and dental caries Mohamed Salim Younus, Karam Ahmed and Duran Kala	140–143
6. The influence of functional tooth units on body mass index in the elderly of the Jember Regency Jevina Sicilia Ahliawan, Zahreni Hamzah and Mei Syafriadi	144–148
7. Howe's dental cast analysis of students at the University of Sumatera Utara Hilda Fitria Lubis and Tiopan Beltsazar Sinurat	149–152
8. The correlation between dental caries and serum iron (Fe) levels in female students of Mamba'ul Khoiriyatil Islamiyah (MHI) Madrasa in Jember, East Java, Indonesia Ristya Widi Endah Yani, Taufan Bramantoro, Farida Wahyuningtyas and Talitha Zulis Islaamy	153–158
9. Leukoplakia in HIV patients and risk of malignancy: A case report Yuli Fatzia Ossa, Anandina Irmagita Soegyanto, Diah Rini Handjari and Endah Ayu Tri Wulandari	159–163
10. Effect of caffeine in chocolate (<i>Theobroma cacao</i>) on the alveolar bone mineral density in guinea pigs (<i>Cavia cobaya</i>) with orthodontic tooth movement Bramita Beta Arnanda, Sri Suparwitri and Pinandi Sri Pudyani	164–169
11. The effect of fixed orthodontic treatment with Edgewise and Straightwire techniques on white spot lesions incidence and accumulation of <i>Streptococcus mutans</i> bacteria Elfira Maharani, Dyah Karunia and Pinandi Sri Pudyani	170–174