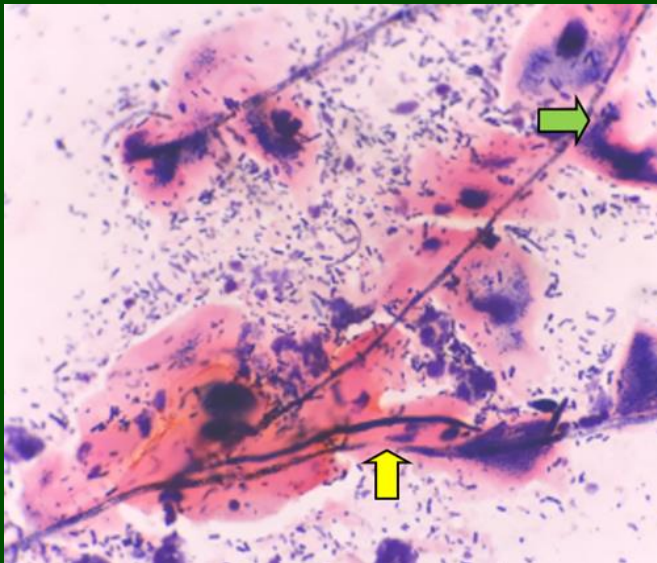


Majalah Obstetri & Ginekologi



JOURNAL OF OBSTETRICS & GYNECOLOGY SCIENCE

Vol. 30 No. 2 August 2022



Yeast cell (green arrow) and pseudohyphae (yellow arrow) of *Candida spp.* appearance on microscopic examination in vulvovaginal candidiasis.

Original Research

- The performance of midwives in early detection of cervical cancer using visual inspection test with acetic acid
- Factors in infertility score on referral and non-referral cases who underwent In Vitro Fertilization (IVF) treatment at a fertility clinic in Surabaya, Indonesia
- Inflammatory markers in lean Polycystic Ovary Syndrome subjects are not associated with the spectrum of dyslipidemia
- Increased vulvovaginal candidiasis incidence risk in various gestational ages at a private midwifery practice in Surabaya, Indonesia
- Calcium serum concentration among pregnant women in a tertiary hospital and its satellite hospital in Medan, Indonesia
- Clinical manifestations comparison in hospitalized pregnant and non-pregnant women with Covid-19 at Mataram University Hospital, Mataram, Indonesia
- Impact of E2 and FSH levels on the severity of Stress Urinary Incontinence (SUI) in menopausal women

Systematic Review

- Updated study of peripartum cardiomyopathy and preeclampsia

Published by

Department of Obstetrics and Gynecology, Faculty of Medicine, Universitas Airlangga
In Collaboration with Indonesian Society of Obstetrics and Gynecology

Accredited by Ministry of Education, Culture, Research, and Technology, Republic of Indonesia
No. 105/E/KPT/2022

Majalah *Obstetri & Ginekologi*

JOURNAL OF OBSTETRICS & GYNECOLOGY SCIENCE

ACCREDITED

Ministry of Education, Culture, Research, and Technology, Republic of Indonesia
No. 105/E/KPT/2022

EDITORIAL TEAM

Founding Editor

Prof. Soehartono Ds, dr, SpOG(K)

Editor-in-Chief

Prof. Dr. Hendy Hendarto, dr, SpOG(K)

Associate Editor

Dr. M. Aldika Akbar, dr, SpOG(K)

Editorial Board

Prof. Gustaaf Dekker, MD, PhD, FDCOG, FRANZCOG (The University of Adelaide, Northern Campus, Australia),
Dr. J. van der Velden PhD (Academic Medical Center, Amsterdam, Netherlands), Prof Dr med Michael D Mueller (Department of
Obstetrics and Gynecology, Bern University, Switzerland), Dr Roy Ng Kwok Weng, MBMS, LRCPS, FRCOG, MOG, FAMS (Division of
Urogynaecology and Pelvic Reconstructive Surgery, National University Hospital, Singapore), Dr Mohammad Afzal Mahmood, MB, BS, PhD
(School of Public Health, University of Adelaide, Australia), Prof. Togas Tulandi, MD., MHCM., FRCSC., FACOG (Department of
Obstetrics and Gynecology, Milton Leong Chair in Reproductive Medicine, Faculty of Medicine and Health Sciences, McGill University,
Montreal, Canada), Prof. Delvac Oceandy, MD, PhD (University of Manchester, Manchester, United Kingdom), Satria Arief Prabowo, MD,
PhD (Faculty of Infectious and Tropical Diseases, Tuberculosis Centre and Vaccine Centre, London School of Hygiene and Tropical
Medicine, London, United Kingdom), Prof James Robert, MD, PhD (Department of Obstetrics, Gynecology, and Reproductive Sciences,
University of Pittsburgh, United States), Prof Dr Budi Iman Santoso, dr, SpOG(K), (Department of Obstetrics and Gynecology, Faculty of
Medicine, Universitas Indonesia, Jakarta, Indonesia), Prof Dr Johannes C Mose, dr, SpOG(K) (Department of Obstetrics and Gynecology,
Faculty of Medicine, Padjadjaran University, Bandung, Indonesia), Prof Dr Sri Sulistyowati, dr, SpOG(K) (Department of Obstetrics and
Gynecology, Faculty of Medicine, Sebelas Maret University, Surakarta, Indonesia), Prof Dr Budi Santoso, dr, SpOG(K)
(Department of Obstetrics and Gynecology, Faculty of Medicine, Universitas Airlangga, Surabaya, Indonesia)

Managing Editors

MY Ardianta Widyanugraha, dr, SpOG, Hanifa Erlin Damayanti, dr, SpOG, Rizki Pranadyan, dr, SpOG,
Arif Tunjungseto, dr, SpOG, Nareswari Imanadha Cininta, dr, SpOG, Rozi Aditya, dr, SpOG,
Pandu Hanindito Habibie, dr, SpOG

Assistant Editors

Mochammad Zuhdy, Priska Dwi Wahyurini

Address

Department of Obstetrics and Gynecology
Faculty of Medicine, Universitas Airlangga - Dr. Soetomo General Academic Hospital
Jl. Mayjen Prof dr Moestopo no. 6 – 8, Surabaya 60286, Indonesia. Phone: 62-31-5501185, Facs: 62-31-5037733
<https://e-journal.unair.ac.id/MOG/>
Email: mog@journal.unair.ac.id, mog.obgsby@gmail.com

Majalah Obstetri & Ginekologi

JOURNAL OF OBSTETRICS & GYNECOLOGY SCIENCE

CONTENT

ORIGINAL RESEARCH :

1. The performance of midwives in early detection of cervical cancer using visual inspection test with acetic acid
Deviati Juwita Sari, Pudji Lestari, Pungky Mulawardhana 52 – 57
2. Factors in infertility score on referral and non-referral cases who underwent In Vitro Fertilization (IVF) treatment at a fertility clinic in Surabaya, Indonesia
Nadhif Rashesa Brahmana, Ashon Sa'adi, Rina Yudiwati 58 – 65
3. Inflammatory markers in lean Polycystic Ovary Syndrome subjects are not associated with the spectrum of dyslipidemia
Elisia Atnil, Andon Hestiantoro, Oki Riayati, Ririn Rahmala Febri, Naylah Muna 66 – 71
4. Increased vulvovaginal candidiasis incidence risk in various gestational ages at a private midwifery practice in Surabaya, Indonesia
Regina Martina Cilik, Willy Sandhika, Zakiyatul Faizah 72 – 77
5. Calcium serum concentration among pregnant women in a tertiary hospital and its satellite hospital in Medan, Indonesia
Muhammad Agung Khoiri, Sarma N Lumbanraja, Duddy Aldiansyah, M. Fidel Ganis Siregar, Makmur Sitepu, M. Rhiza Tala 78 – 83
6. Clinical manifestations comparison in hospitalized pregnant and non-pregnant women with Covid-19 at Mataram University Hospital, Mataram, Indonesia
Putu Diah Ananda Putri Atmaja, Ario Danianto, Titi Pambudi Karuniawaty 84 – 91
7. Impact of E2 and FSH levels on the severity of Stress Urinary Incontinence (SUI) in menopausal women
Leny Suardi, Pribakti Budinurdjaja, Wiwit Agung Sri Nurcahyawati, Meitria Syahadatina Noor 92 – 100

SYSTEMATIC REVIEW :

8. Updated study of peripartum cardiomyopathy and preeclampsia
I Gusti Ngurah Agung Trisnu Kamajaya, Made Bagus Dwi Aryana 101 – 107

Cover :

Yeast cell (green arrow) and pseudohyphae (yellow arrow) of *Candida spp.* appearance on microscopic examination in vulvovaginal candidiasis.

This edition page 74

AUTHOR GUIDELINES

Majalah Obstetri & Ginekologi publishes original articles on all aspects of obstetrics and gynecology. Articles can be classified as original research, case report/case series, review article, systematic review, meta-analysis, and opinion that keep the readers informed of current issues, innovative thinking in obstetrics and gynecology. Articles are considered for publication with the condition that they have not been published, submitted, or being under consideration for publication elsewhere. Manuscript must be written in American English with proper grammar, while the Abstract will be published in English and Indonesian. Authors should follow the **Author Guidelines** and the manuscript is arranged according to the **Manuscript Template**. Manuscript must be submitted through online submission by registered users. Authors can register themselves in the journal system. For further question contact us at: mog@journal.unair.ac.id.

General Principles

The manuscript must be free of typing errors and have a proportional length. The length of each manuscript is 5-10 pages of A4 size paper (1.5 spaces, Times New Roman font size 12, with normal margins page layout of 2.54 cm on each side). The recommended references are the updated ones in the last ten (10) years from the date of current submission (minimal of 20 references), unless in a special case accepted by the editors due to scientific reasons.

Total number of tables and figures should be limited, advisably no more than five. Tables should be numbered with Arabic numbers, and the title of each table should be written center-aligned at the top of the table, in normal Times New Roman, font size 12. Text within tables should be written in 1 space, normal Times New Roman font size 10 or less. Figures (including graphs, diagrams, charts, drawings, and photographs) should be produced at least 300 dpi in jpg, jpeg, or png format, have clear legends, numbered with Arabic numerals, and the title of each figure should be written center-aligned at the bottom of the figure, in normal Times New Roman, font size 12. All words in Latin must be written in italics. The use of abbreviations is generally agreed upon, and an extension must be given in the first mention of the abbreviation. Decimal numbers are marked with points (.).

All types of manuscripts must consist of:

- **Title**, which must be concise, specific, and informative. The title must consist of no more than

30 words, written on the top line with bold Gill Sans MT font size 12, left-aligned, and in sentence case. Latin name is italicized (italic).

- **The author's name(s)** is complete (without title) and the home institutions of the authors are written with an initial capital letter for each word in Gill Sans MT font, size 10, left-aligned, without ending points. If there is more than 1 author, all is written, separated by commas. Numeric code in superscript is added behind the author's name. The author's home institution is written under the author's name beginning with a numeric code (superscript). The name of the institution is followed by the name of the city and the country where the institution is located. At least one of the authors is required to add their **ORCID IDs** listed on <https://orcid.org/>. The link should be embedded on the ORCID logo after the authors' names. At least 1 of the authors must include external (more than 1, if necessary) affiliation(s) outside the *Majalah Obstetri & Ginekologi* publisher.
- **Abstract** must be arranged with a brief description (containing no more than 250 words). The abstract is written in English.
 - a. Abstract of original research report, systematic review or meta-analysis must consist of objective, materials and methods, results, and conclusion each written as one paragraph.
 - b. Abstract of narrative review article must consist narration summarizing the content of the manuscript, written in one paragraph.
 - c. Abstract of case report or case series must consist of background, objective, case(s), and conclusion, each written in one paragraph.
- **Keywords** consist of 3-5 words and/or phrases, written under abstract as seen in the template, in English, started with a capital letter (sentence case), separated with semi-colon, and without an ending point. Keywords should apply terms present in **Medical Subject Headings (MeSH)**. The keywords must contain at least one keyword of **Sustainable Development Goals (SDGs)**.
- **Running title** (short version of full title or abbreviated title) must be written as a header of the manuscript on the right side.
- **Correspondence** is written under the keywords including the name, full address, and email address of one of the authors responsible as corresponding author.
- **Highlights** of the manuscript, which consist of minimally two keypoints representing the novel contributions of the study and must not be the copy-paste and/or repetition of sentences of any other

parts of the manuscript. These two highlights should be written before the introduction using number bullets (see template).

Article Types

The journal accepts the following types of articles:

a. Original research

Original research reports a substantial body of laboratory or clinical work, presenting the outcome of a large trial, case control, observational or retrospective study. The authors must confirm in the manuscript that they have ethical clearance for the conduct of the reported research. The procedure in the research should be in accordance with the **Declaration of Helsinki 2013**. The ethical clearance should be submitted along with the manuscript. The manuscript should be approximately 3500 words. Total number of tables and figures are limited, advisably not more than five, and references are minimally 20 from the last 10 years before the date of submission. The text consists of **Abstract, Introduction, Materials and Methods, Results and Discussion, Conclusion, and Disclosures**. The Disclosures consist of **Acknowledgment, Conflict of Interest, Funding, and Authors Contribution**.

b. Case report/case series

Case report highlights important innovations with wide applicability or previously unpublished complications of new techniques or medications. The authors must confirm in the manuscript that they have obtained **written permission** of those whose case is being presented. The manuscript should be approximately 3500 words. Total number of tables and figures are limited, advisably not more than five, and references are minimally 20 from the last 10 years before the date of submission. The text consists of **Abstract, Introduction, Case Report/Case Series, Discussion, Conclusion, and Disclosures**. The Disclosures consist of **Acknowledgment, Conflict of Interest, Patient Consent for Publication, Funding, and Authors Contribution**.

c. Review article

Review article is a survey of previously published research on a topic. It should give an overview of current thinking on the topic. The manuscript should be approximately 3500 words. Total number of tables and figures are limited, advisably not more than five, and references are minimally 20 from the last 10 years before the date of submission. The text consists of **Abstract, Introduction, any subheadings as needed**

by the author(s), Conclusion, and Disclosures. The Disclosures consist of **Acknowledgment, Conflict of Interest, Funding, and Authors Contribution**.

d. Systematic review

Systematic review is a synthesis of the evidence on a clearly presented topic using critical methods to identify, define and assess research on the topic, extracting and interpreting data from published studies on the topic, then analyzing, describing, and summarizing interpretations into a refined conclusion. Appropriate methodology should be followed, such as PROSPERO, the online international register for systematic reviews. Total number of tables and figures are limited, advisably not more than five, and references are minimally 20 from the last 10 years before the date of submission. The text consists of **Abstract, Introduction, Materials and Methods, Results and Discussion, Conclusion, and Disclosures**. The Disclosures consist of **Acknowledgment, Conflict of Interest, Funding, and Authors Contribution**.

e. Meta-analysis

Meta-analysis is a statistical analysis combining the results of multiple scientific studies, analyzing multiple scientific studies addressing the same question, with each individual study reporting measurements that are expected to have some degree of error. Total number of tables and figures are limited, advisably not more than five, and references are minimally 20 from the last 10 years before the date of submission. The text consists of **Abstract, Introduction, Materials and Methods, Results and Discussion, Conclusion, and Disclosures**. The Disclosures consist of **Acknowledgment, Conflict of Interest, Funding, and Authors Contribution**.

f. Opinion

Opinion is commentaries on subjects reflecting new concepts or controversies in research, education, healthcare organization or clinical practice. The word count is a maximum of 1800 words with a maximum of 10 references. Abstract is not required and subheadings or boxed of keypoints are optional. Tables and figures should not exceed three (3).

Authors must also supply the **Author Statement and Copyright Transfer Agreement** issued by Majalah Obstetri & Ginekologi. The form can be downloaded from the website of the journal. The statement should be submitted along with the submission of the manuscript.

References

Number of references depends on each type of article (see “Article types”) and should in general be limited to ten years before the date of submission. References must be numbered in the order in which they are mentioned in the text. Use the style of the examples below, which are based on the **International Committee of Medical Journal Editors (ICMJE)** Recommendations for the Conduct, Reporting, Editing and Publication of Scholarly Work in Medical Journals: Sample References. Avoid using abstracts as references. Information from manuscripts submitted but not yet accepted should be cited in the text as “unpublished observations” with written permission from the source. Papers accepted but not yet published may be included as references; designate the journal and add “Forthcoming”. Avoid citing “personal communication” unless it provides essential information not available publically, name the person and date of communication, obtain written permission and confirmation of accuracy from the source of a personal communication. Authors is recommended to use reference management software, in writing the citations and references such as: Mendeley®, Zotero®, EndNote®, and Reference Manager®.

Here are some examples of the references:

1. Journal

Up to three authors, list all the authors.

Halpern SD, Ubel PA, Caplan AL. Solid-organ transplantation in HIV-infected patients. *N Engl J Med.* 2002;347(4):284-7.

More than three authors, list the first three authors, followed by et al.

Rose ME, Huerbin MB, Melick J, et al. Regulation of interstitial excitatory amino acid concentrations after cortical contusion injury. *Brain Res.* 2002;935(1-2):40-6.

2. Books

Butler SW. *Secrets from the black bag.* London: The Royal College of General Practitioners; 2005.

Chapter of an edited book

Meltzer PS, Kallioniemi A, Trent JM. Chromosome alterations in human solid tumors. In: Vogelstein B, Kinzler KW, editors. *The genetic basis of human cancer.* New York: McGraw-Hill; 2002. p. 93-113.

Translated book

Luria AR. *The mind of a mnemonist.* Solotaroff L, translator. New York: Avon Books; 1969.

Electronic book/E-book

Chapter from an electronic book

Darwin C. *On the origin of species by means of natural selection or the preservation of favoured races in the struggle for life* [Internet]. London: John Murray; 1859. Chapter 5, *Laws of variation.* [cited 2010 Apr 22]. Available from: <http://www.talkorigins.org/faqs/origin/chapter5.html>

Full text electronic book

Macdonald S. editor. *Maye’s midwifery* 14th ed. [eBook]. Edinburgh: Bailliere Tindall; 2011 [cited 2012 Aug 26]. Available from: Ebrary.

Proceeding book

Offline proceeding

Kimura J, Shibasaki H, editors. *Recent advances in clinical neurophysiology. Proceedings of the 10th International Congress of EMG and Clinical Neurophysiology; 1995 Oct 15-19; Kyoto, Japan.* Amsterdam: Elsevier; 1996.

Online proceeding

Muller S, editor. *Proceedings of the 10th international conference on head-driven phrase structure grammar* [Internet]; 2003 Jul 18-20; East Lansing (MI). Stanford (CA): CSLI Publications; 2003 [cited 2017 Nov 16]. Available from: <http://web.stanford.edu/group/cslipublicationsSta/cslipublications/HPSG/2003/toc.shtml>

Thesis/dissertation

Offline thesis/dissertation

Kay JG. *Intracellular cytokine trafficking and phagocytosis in macrophages* [dissertation]. St Lucia, Qld: University of Queensland; 2007

Online thesis/dissertation

Pahl KM. *Preventing anxiety and promoting social and emotional strength in early childhood: an investigation of risk factors* [dissertation on the Internet]. St Lucia, Qld: University of Queensland; 2009 [cited 2017 Nov

22]. Available from: <https://espace.library.uq.edu.au/view/UQ:178027>

3. Website

With author

Diabetes Australia. Gestational diabetes [Internet]. Canberra (ACT): Diabetes Australia; 2015 [updated 2015; cited 2017 Nov 23]. Available from: <https://www.diabetesaustralia.com.au/gestational-diabetes>

No author

The family impact of Attention Deficit Hyperactivity Disorder (ADHD) [Internet]. 2009 Nov 1 [updated 2010 Jan 1; cited 2010 Apr 8]. Available from: <http://www.virtualmedicalcentre.com.au/healthandlifestyle.asp?sid=192&title=The-Family-Impact-of-Attention-Deficit-Hyperactivity-Disorder-%28ADHD%29page=2>

CITATION WRITING

As the general rule, the reference numbers:

- should be placed outside full stops and commas
- the citation number can be placed next to the author name where emphasis is placed on the author eg. Smith²
- When multiple references are cited at a given place in the text, use a hyphen to join the first and last numbers that are inclusive. Use commas (without spaces) to separate non-inclusive numbers in a multiple citation e.g. (2,3,4,5,7,10) is abbreviated to (2-5,7,10).
- Do not use a hyphen if there are no citation numbers in between that support your statement e.g. (1-2). Use instead (1,2)

For example:

Moir and Jessel maintain “that the sexes are interchangeable”.¹

Numerous studies²⁰⁻²² have.....

Smith's research²¹

Smith and Jones’²² research

Up to 3 authors eg. Smith, Jones and McDonald reported that²³

More than 3 authors eg. Smith et al.²⁴ reports.