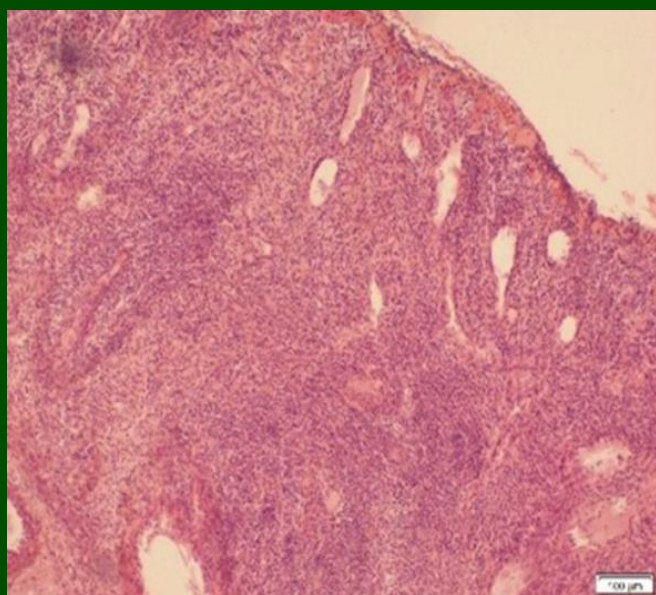


# Majalah Obstetri & Ginekologi



JOURNAL OF OBSTETRICS & GYNECOLOGY SCIENCE

Vol. 33 No. 3 December 2025



**Stromal inflammatory cell infiltration showing  
Klintrup-Mäkinen (KM) score 3**

## Original Research

- Blood Pressure Variability as a predictor of maternal and neonatal outcomes in preeclampsia
- Comparative analysis of stromal inflammatory cell infiltration and HPV infection status in cervical dysplasia and squamous cell carcinoma using the Klintrup-Mäkinen Scoring method
- Ethanol extract of *Cyclea barbata* Miars induces follicle development through 17 $\beta$ -estradiol level and LHR expression
- Maternal profiles and outcome of Placenta Accreta Spectrum (PAS) in a retrospective cohort study in Dr. Saiful Anwar General Hospital, Malang, Indonesia
- Gestational weight gain as a factor associated with urinary incontinence and quality of life
- Reinterpreting potential biomarker in umbilical cord as a marker of chorioamnionitis and funisitis in prelabor ROM

## Scoping Review

- Exploring the role of healthcare providers in supporting women after pregnancy loss

## Systematic Review

- Perinatal exposure to ultraprocessed foods and its impact on maternal gut dysbiosis, placental inflammation, and neonatal immune programming

## Case Series

- Vesicovaginal fistula with surgical interventions at Dr. Ramelan Naval Hospital, Surabaya, Indonesia

## Review Article

- Molecular mechanisms and biomarkers of autophagy in early onset preeclampsia: Key genes, pathways, and potential diagnostic/therapeutic targets

Published by

Department of Obstetrics and Gynecology, Faculty of Medicine, Universitas Airlangga  
In Collaboration with Indonesian Society of Obstetrics and Gynecology

Accredited by Ministry of Education, Culture, Research, and Technology, Republic of Indonesia  
No. 105/E/KPT/2022

# *Majalah Obstetri & Ginekologi*

**JOURNAL OF OBSTETRICS & GYNECOLOGY SCIENCE**

---

**ACCREDITED**

Ministry of Education, Culture, Research, and Technology, Republic of Indonesia  
**No. 105/E/KPT/2022**

**EDITORIAL TEAM**

**Editor-in-Chief**

Prof. Dr. Hendy Hendarto, dr, SpOG(K)

**Associate Editor**

Dr. M. Ilham Aldika Akbar, dr, SpOG(K)

**Senior Editor**

Prof. Soehartono Ds, dr, SpOG(K)

**Editorial Board**

Prof. Gustaaf Dekker, MD, PhD, FDCOG, FRANZCOG (The University of Adelaide, Northern Campus, Australia),  
Dr. J. van der Velden PhD (Academic Medical Center, Amsterdam, Netherlands), Prof Dr med Michael D Mueller (Department of  
Obstetrics and Gynecology, Bern University, Switzerland), Dr Roy Ng Kwok Weng, MBMS, LRCPS, FRCOG, MOG, FAMS (Division of  
Urogynaecology and Pelvic Reconstructive Surgery, National University Hospital, Singapore), Dr Mohammad Afzal Mahmood, MB, BS, PhD  
(School of Public Health, University of Adelaide, Australia), Prof. Togas Tulandi, MD., MHCM., FRCSC., FACOG (Department of  
Obstetrics and Gynecology, Milton Leong Chair in Reproductive Medicine, Faculty of Medicine and Health Sciences, McGill University,  
Montreal, Canada), Prof. Delvac Oceandy, MD, PhD (University of Manchester, Manchester, United Kingdom), Satria Arief Prabowo, MD,  
PhD (Faculty of Infectious and Tropical Diseases, Tuberculosis Centre and Vaccine Centre, London School of Hygiene and Tropical  
Medicine, London, United Kingdom), Prof James Robert, MD, PhD (Department of Obstetrics, Gynecology, and Reproductive Sciences,  
University of Pittsburgh, United States), Prof Dr Budi Iman Santoso, dr, SpOG(K), (Department of Obstetrics and Gynecology, Faculty of  
Medicine, Universitas Indonesia, Jakarta, Indonesia), Prof Dr Johannes C Mose, dr, SpOG(K) (Department of Obstetrics and Gynecology,  
Faculty of Medicine, Padjadjaran University, Bandung, Indonesia), Prof Dr Sri Sulistyowati, dr, SpOG(K) (Department of Obstetrics and  
Gynecology, Faculty of Medicine, Sebelas Maret University, Surakarta, Indonesia), Prof Dr Budi Santoso, dr, SpOG(K)  
(Department of Obstetrics and Gynecology, Faculty of Medicine, Universitas Airlangga, Surabaya, Indonesia)

**Section Editors**

Rozi Aditya Aryananda, dr, SpOG(K), Rizki Pranadyan, dr, SpOG(K), Nareswari Imanadha Cininta, dr, SpOG(K)

**Managing Editors**

MY Ardianta Widyanugraha, dr, SpOG(K), Hanifa Erlin Damayanti, dr, SpOG,  
Arif Tunjungseto, dr, SpOG(K), Pandu Hanindito Habibie, dr, SpOG, M.Ked.Klin, Riska Wahyuningtyas, dr, SpOG, M.Ked.Klin

**Assistant Editors**

Mochammad Zuhdy, Priska Dwi Wahyurini

**Address**

Department of Obstetrics and Gynecology  
Faculty of Medicine, Universitas Airlangga - Dr. Soetomo General Academic Hospital  
Jl. Mayjen Prof dr Moestopo no. 6 – 8, Surabaya 60286, Indonesia. Phone: 62-31-5501185, Facs: 62-31-5037733  
<https://e-journal.unair.ac.id/MOG/>  
Email: [mog@journal.unair.ac.id](mailto:mog@journal.unair.ac.id), [mog.obgsby@gmail.com](mailto:mog.obgsby@gmail.com)

# Majalah Obstetri & Ginekologi

## JOURNAL OF OBSTETRICS & GYNECOLOGY SCIENCE

### CONTENT

#### ORIGINAL RESEARCH

1. Blood Pressure Variability as a predictor of maternal and neonatal outcomes in preeclampsia  
**Ryan Saktika Mulyana, Tjokorda Gede Astawa Pemayun, Ida Ayu Narayani, I Putu Gede Danika Adikarya, I Gusti Bagus Mulia Agung Pradnyaandara, I Gusti Ayu Cintya Paramyta** ..... 180 – 187
2. Comparative analysis of stromal inflammatory cell infiltration and HPV infection status in cervical dysplasia and squamous cell carcinoma using the Klintrup-Mäkinen Scoring method  
**Nicholas Adrian Fahendra, Daniel Edbert, Christian Ardianto, Lilis Lilis** ..... 188 – 194
3. Ethanol extract of *Cyclea barbata* Miers induces follicle development through 17 $\beta$ -estradiol level and LHR expression  
**Noviyanti Noviyanti, Yuyun Yueniwati, Bambang Rahardjo, Galuh W. Permatasari** ..... 195 – 203
4. Maternal profiles and outcome of Placenta Accreta Spectrum (PAS) in a retrospective cohort study in Dr. Saiful Anwar General Hospital, Malang, Indonesia  
**Bambang Rahardjo, Harry Dwi Pratama, Rosalia Purbandari, Fathi Nabila Alim** ..... 204 – 213
5. Gestational weight gain as a factor associated with urinary incontinence and quality of life  
**Rizka Aulia, M. Rizkar Arev Sukarsa, Dwi Prasetyo, Dany Hilmanto, RM Sonny Sasotya, Hadi Susiarso** ..... 214 – 220
6. Reinterpreting potential biomarker in umbilical cord as a marker of chorioamnionitis and funisitis in prelabor ROM  
**Julian Dewantiningrum, Besari Adi Pramono, Agoes Oerip Poerwono, Budi Irawan, Rizki Aditya Bachrudin, Herman Kristanto** ..... 221 – 227

#### SCOPING REVIEW

7. Exploring the role of healthcare providers in supporting women after pregnancy loss: A scoping review  
**Rafhani Rosyidah, Nurul Azizah, Ratna Dwi Djayanti, Retno Dewi Prisusanti** ..... 228 – 235

#### SYSTEMATIC REVIEW

8. Perinatal exposure to ultraprocessed foods and its impact on maternal gut dysbiosis, placental inflammation, and neonatal immune programming: A systematic review  
**I Nyoman Hariyasa Sanjaya, Wiku Andonotopo, Muhammad Adrianes Bachnas, Julian Dewantiningrum, Mochammad Besari Adi Pramono, Ryan Saktika Mulyana, et al.** ..... 236 – 248

#### CASE SERIES

9. Vesicovaginal fistula with surgical interventions at Dr. Ramelan Naval Hospital, Surabaya, Indonesia  
**Sahika Nisandi Ayudelvi, Risa Najmi, Ritma Visi Amala, Rizka Indah Ramadina, Salma Inas Konitatunisa, Mita Herdiyantini, Dian Ardiana** ..... 249 – 261

#### REVIEW ARTICLE

10. Molecular mechanisms and biomarkers of autophagy in early onset preeclampsia: Key genes, pathways, and potential diagnostic/therapeutic targets  
**Anak Agung Ngurah Jaya Kusuma** ..... 262 – 270

Cover :  
Stromal inflammatory cell infiltration showing  
Klintrup-Mäkinen (KM) score 3

## AUTHOR GUIDELINES

**Majalah Obstetri & Ginekologi** publishes original articles on all aspects of obstetrics and gynecology. Articles can be classified as **original research**, **case series**, **review article**, **systematic review**, and **meta-analysis** that keep the readers informed of current issues, innovative thinking in obstetrics and gynecology. We welcome submissions that contribute to the advancement of knowledge in obstetrics and gynecology. Articles are considered for publication with the condition that they have not been published, submitted, or being under consideration for publication elsewhere. Manuscript must be written in American English with proper grammar. Authors should follow the **Author Guidelines** and the manuscript is arranged according to the **Manuscript Template**. Manuscript must be submitted through online submission by registered users. Authors can register themselves in the journal system. For further question contact us at: [mog@journal.unair.ac.id](mailto:mog@journal.unair.ac.id).

### General Principles

The manuscript must be free of typing errors and have a proportional length. The length of each manuscript is 5-10 pages of A4 size paper (1.5 spaces, Times New Roman font size 12, with normal margins page layout of 2.54 cm on each side). The recommended references are the updated ones in the last ten (10) years from the date of current submission (minimal of 20 references), unless in a special case accepted by the editors due to scientific reasons.

Total number of tables and figures should be limited, advisably no more than five. Tables should be numbered with Arabic numbers, and the title of each table should be written center-aligned at the top of the table, in normal Times New Roman, font size 12. Text within tables should be written in 1 space, normal Times New Roman font size 10 or less. Figures (including graphs, diagrams, charts, drawings, and photographs) should be produced at least 300 dpi in jpg, jpeg, or png format, have clear legends, numbered with Arabic numerals, and the title of each figure should be written center-aligned at the bottom of the figure, in normal Times New Roman, font size 12. All words in Latin must be written in italics. The use of abbreviations is generally agreed upon, and an extension must be given in the first mention of the abbreviation. Decimal numbers are marked with points (.).

All types of manuscripts must consist of:

- **Title**, which must be concise, specific, and informative. The title must consist of no more than 30 words, written on the top line with bold Gill Sans MT font size 12, left-aligned, and in sentence case. Latin name is italicized (*italic*).
- **The author's name(s)** is complete (without title) and the home institutions of the authors are written with an initial capital letter for each word in Gill Sans MT font, size 10, left-aligned, without ending points. If there is more than 1 author, all is written, separated by commas. Numeric code in superscript is added behind the author's name. The author's home institution is written under the author's name beginning with a numeric code (superscript). The name of the institution is followed by the name of the city and the country where the institution is located. At least one of the authors is required to add their **ORCID IDs** listed on <https://orcid.org/>. The link should be embedded on the ORCID logo after the authors' names. At least 1 of the authors must include external (more than 1, if necessary) affiliation(s) outside the Majalah Obstetri & Ginekologi publisher.
- **Abstract** must be arranged with a brief description (containing no more than 250 words). The abstract is written in English.
  - a. Abstract of original research report, systematic review/scoping review or meta-analysis must consist of objective, materials and methods, results, and conclusion each written as one paragraph.
  - b. Abstract of narrative review article must consist narration summarizing the content of the manuscript, written in one paragraph.
  - c. Abstract of case series must consist of background, objective, case(s), and conclusion, each written in one paragraph.
- **Keywords** consist of 3-5 words and/or phrases, written under abstract as seen in the template, in English, started with a capital letter (sentence case), separated with semi-colon, and without an ending point. Keywords should apply terms present in **Medical Subject Headings (MeSH)**. The keywords must contain at least one keyword of **Sustainable Development Goals (SDGs)**.
- **Running title** (short version of full title or abbreviated title) must be written as a header of the manuscript on the right side.
- **Correspondence** is written under the keywords including the name, full address, and email address of one of the authors responsible as corresponding author.

- **Highlights** of the manuscript, which consist of minimally two keypoints representing the novel contributions of the study and must not be the copy-paste and/or repetition of sentences of any other parts of the manuscript. These two highlights should be written before the introduction using number bullets (see template).

## Article Types

The journal accepts the following types of articles:

### a. Original research

Original research reports a substantial body of laboratory or clinical work, presenting the outcome of a large trial, case control, observational or retrospective study. The authors must confirm in the manuscript that they have ethical clearance for the conduct of the reported research. The procedure in the research should be in accordance with the **Declaration of Helsinki 2013**. The ethical clearance should be submitted along with the manuscript. The manuscript should be approximately 3500 words. Total number of tables and figures are limited, advisably not more than five, and references are minimally 20 from the last 10 years before the date of submission. The text consists of **Abstract, Introduction, Materials and Methods, Results and Discussion, Conclusion, and Disclosures**. The Disclosures consist of **Acknowledgment, Conflict of Interest, Funding, and Authors Contribution**.

### b. Case series

Case series highlights important innovations with wide applicability or previously unpublished complications of new techniques or medications. The authors must confirm in the manuscript that they have obtained **written permission** of those whose case is being presented. The manuscript should be approximately 3500 words. Total number of tables and figures are limited, advisably not more than five, and references are minimally 20 from the last 10 years before the date of submission. The text consists of **Abstract, Introduction, Case Series, Discussion, Conclusion, and Disclosures**. The Disclosures consist of **Acknowledgment, Conflict of Interest, Patient Consent for Publication, Funding, and Authors Contribution**.

### c. Review article

Review article is a survey of previously published research on a topic. It should give an overview of current thinking on the topic. The manuscript should be approximately 3500 words. Total number of tables and

figures are limited, advisably not more than five, and references are minimally 20 from the last 10 years before the date of submission. The text consists of **Abstract, Introduction, any subheadings as needed by the author(s), Conclusion, and Disclosures**. The Disclosures consist of **Acknowledgment, Conflict of Interest, Funding, and Authors Contribution**.

### d. Systematic review/Scoping review

Systematic review is a synthesis of the evidence on a clearly presented topic using critical methods to identify, define and assess research on the topic, extracting and interpreting data from published studies on the topic, then analyzing, describing, and summarizing interpretations into a refined conclusion. Appropriate methodology should be followed, such as PROSPERO, the online international register for systematic reviews. Total number of tables and figures are limited, advisably not more than five, and references are minimally 20 from the last 10 years before the date of submission. A scoping review is a type of literature review that aims to map the existing research literature on a broad topic area, identifying key concepts, evidence sources, and gaps in knowledge. Unlike systematic reviews, scoping reviews typically have less stringent inclusion criteria and may include a wide range of study designs to provide a comprehensive overview of the literature. They are often used to explore emerging research areas, clarify key concepts, and inform future research directions. Scoping reviews use a systematic approach to searching, selecting, and summarizing relevant studies but do not typically assess the quality of included studies. The authors should refer to existing guidelines and frameworks to ensure rigor and transparency in conducting scoping reviews, such as the Preferred Reporting Items for Systematic reviews and Meta-Analyses extension for Scoping Reviews (PRISMA-ScR). Both systematic and scoping review consists of **Abstract, Introduction, Materials and Methods, Results and Discussion, Conclusion, and Disclosures**. The Disclosures consist of **Acknowledgment, Conflict of Interest, Funding, and Authors Contribution**.

### e. Meta-analysis

Meta-analysis is a statistical analysis combining the results of multiple scientific studies, analyzing multiple scientific studies addressing the same question, with each individual study reporting measurements that are expected to have some degree of error. Total number of tables and figures are limited, advisably not more than five, and references are minimally 20 from the last 10 years before the date of submission. The text consists of **Abstract, Introduction, Materials and Methods,**

## Results and Discussion, Conclusion, and Disclosures.

The Disclosures consist of **Acknowledgment, Conflict of Interest, Funding, and Authors Contribution.**

Authors must also supply the **Author Statement and Copyright Transfer Agreement** issued by Majalah Obstetri & Ginekologi. The form can be downloaded from the website of the journal. The statement should be submitted along with the submission of the manuscript.

## References

Number of references depends on each types of article (see “Article types”) and should in general be limited to ten years before the date of submission. References must be numbered in the order in which they are mentioned in the text. Use the style of the examples below, which are based on the **International Committee of Medical Journal Editors (ICMJE)** Recommendations for the Conduct, Reporting, Editing and Publication of Scholarly Work in Medical Journals: Sample References. Avoid using abstracts as references. Information from manuscripts submitted but not yet accepted should be cited in the text as “unpublished observations” with written permission from the source. Papers accepted but not yet published may be included as references; designate the journal and add “Forthcoming”. Avoid citing “personal communication” unless it provides essential information not available publicly, name the person and date of communication, obtain written permission and confirmation of accuracy from the source of a personal communication. Authors is recommended to use reference management software, in writing the citations and references such as: Mendeley®, Zotero®, EndNote®, and Reference Manager®.

Here are some examples of the references:

### 1. Journal

*Up to three authors, list all the authors.*

Halpern SD, Ubel PA, Caplan AL. Solid-organ transplantation in HIV-infected patients. *N Engl J Med*. 2002;347(4):284-7.

*More than three authors, list the first three authors, followed by et al.*

Rose ME, Huerbin MB, Melick J, et al. Regulation of interstitial excitatory amino acid concentrations after cortical contusion injury. *Brain Res*. 2002;935(1-2):40-6.

### 2. Books

Butler SW. *Secrets from the black bag*. London: The Royal College of General Practitioners; 2005.

*Chapter of an edited book*

Meltzer PS, Kallioniemi A, Trent JM. Chromosome alterations in human solid tumors. In: Vogelstein B, Kinzler KW, editors. *The genetic basis of human cancer*. New York: McGraw-Hill; 2002. p. 93-113.

*Translated book*

Luria AR. *The mind of a mnemonist*. Solotaroff L, translator. New York: Avon Books; 1969.

*Electronic book/E-book*

Chapter from an electronic book

Darwin C. *On the origin of species by means of natural selection or the preservation of favoured races in the struggle for life* [Internet]. London: John Murray; 1859. Chapter 5, *Laws of variation*. [cited 2010 Apr 22]. Available from: <http://www.talkorigins.org/faqs/origin/chapter5.html>

Full text electronic book

Macdonald S. editor. *Maye's midwifery* 14th ed. [eBook]. Edinburgh: Bailliere Tindall; 2011 [cited 2012 Aug 26]. Available from: Ebrary.

*Proceeding book*

Offline proceeding

Kimura J, Shibasaki H, editors. *Recent advances in clinical neurophysiology. Proceedings of the 10th International Congress of EMG and Clinical Neurophysiology*; 1995 Oct 15-19; Kyoto, Japan. Amsterdam: Elsevier; 1996.

Online proceeding

Muller S, editor. *Proceedings of the 10th international conference on head-driven phrase structure grammar* [Internet]; 2003 Jul 18-20; East Lansing (MI). Stanford (CA): CSLI Publications; 2003 [cited 2017 Nov 16]. Available from: <http://web.stanford.edu/group/cslipublications/Sta/cslipublications/HPSG/2003/toc.shtml>

*Thesis/dissertation*

Offline thesis/dissertation

Kay JG. Intracellular cytokine trafficking and phagocytosis in macrophages [dissertation]. St Lucia, Qld: University of Queensland; 2007

Online thesis/dissertation

Pahl KM. Preventing anxiety and promoting social and emotional strength in early childhood: an investigation of risk factors [dissertation on the Internet]. St Lucia, Qld: University of Queensland; 2009 [cited 2017 Nov 22]. Available from: <https://espace.library.uq.edu.au/view/UQ:178027>

### 3. Website

*With author*

Diabetes Australia. Gestational diabetes [Internet]. Canberra (ACT): Diabetes Australia; 2015 [updated 2015; cited 2017 Nov 23]. Available from: <https://www.diabetesaustralia.com.au/gestational-diabetes>

*No author*

The family impact of Attention Deficit Hyperactivity Disorder (ADHD) [Internet]. 2009 Nov 1 [updated 2010 Jan 1; cited 2010 Apr 8]. Available from: <http://www.virtualmedicalcentre.com.au/healthandlifestyle.asp?sid=192&title=The-Family-Impact-of-Attention-Deficit-Hyperactivity-Disorder-%28ADHD%29page=2>

## CITATION WRITING

As the general rule, the reference numbers:

- should be placed outside full stops and commas
- the citation number can be placed next to the author name where emphasis is placed on the author eg. Smith<sup>2</sup>
- When multiple references are cited at a given place in the text, use a hyphen to join the first and last numbers that are inclusive. Use commas (without spaces) to separate non-inclusive numbers in a multiple citation e.g. (2,3,4,5,7,10) is abbreviated to (2-5,7,10).
- Do not use a hyphen if there are no citation numbers in between that support your statement e.g. (1-2). Use instead (1,2)

For example:

Moir and Jessel maintain “that the sexes are interchangeable”.<sup>1</sup>

Numerous studies<sup>20-22</sup> have.....

Smith's research .....<sup>21</sup>

Smith and Jones'<sup>22</sup> research .....

Up to 3 authors eg. Smith, Jones and McDonald reported that .....<sup>23</sup>

More than 3 authors eg. Smith et al.<sup>24</sup> reports.

